

# Champlain College Adds Rooftop Terrace to Awaken Views and Future Possibilities

produced by Greg Olson

Founded in 1878, Champlain College® is a small, not-for-profit, private college overlooking Lake Champlain and Burlington, Vermont, with additional campuses in Montreal, Canada, and Dublin, Ireland.

Champlain College's newly opened \$24.5 million Center for Communication and Creative Media (CCM) project is a 42,000 square foot addition and alterations to the existing Hauke Center and Alumni Auditorium located at the center of Champlain College.

The center provides students and faculty with state-of-the-art facilities for Game and Graphic Design labs, Sound Studios, a Filmmaking and Broadcast Media Production Stage, an Art Gallery and a Drawing Studio. The building also contains a Dining and Events Center. The facility offers a large conference room space (capacity: 300 persons +/-) able to accommodate a variety of academic and social functions.

"This building is all about purposeful connection. The proximity of our faculty and our students and our community members and those looking in our campus store for the first time and those grabbing a cup of coffee on their way somewhere. All of that excitement and purposeful buzz exists in this building by design." Dr. Laurie Quinn, Provost and Chief Academic Officer.

## Rooftop Terrace

The conference center is the goto space. "Here is where we host on-campus recognition dinners and special lecture events. The terrace is adjacent and offers nice views of Lake Champlain. When school is in session students frequent that space after grabbing food inside. And, in summer, the terrace is available for weddings and other social gatherings. The space will accommodate large groups and can also be tented," shared Steven Mease, Director of Public Information & News for Champlain College.

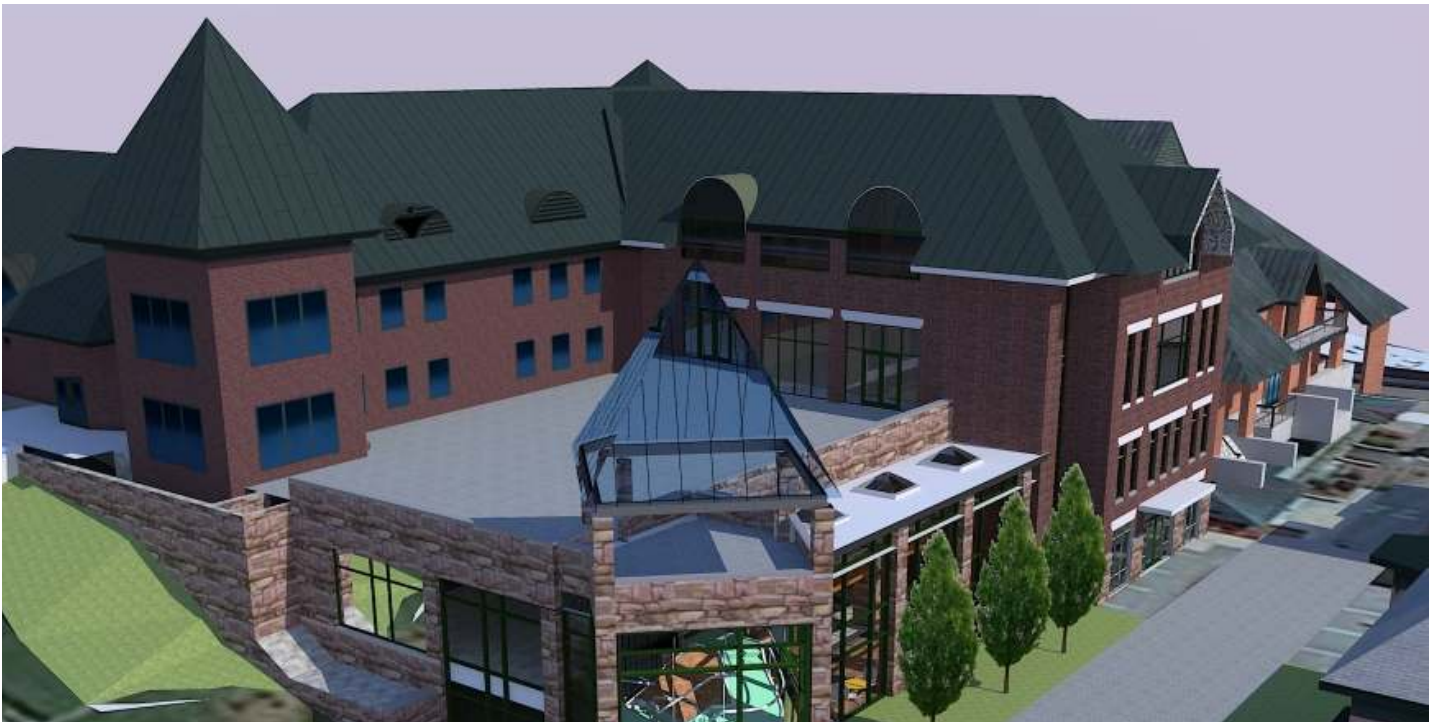
## Buzon Pedestals Unlocks Possibilities

The socializing, gathering, and sharing of ideas on this rooftop terrace is made possible by what's below the surface. Buzon Screwjack Pedestals are the hidden ingredient that keeps the porcelain tile decking surface stable, level and worry free.



One advantage of using Buzon Pedestals is the ability to maintain a level surface for people and furniture while routing water below on the slope-to-drain substrate. It's all made possible by Buzon's patented slope correction system.

John Caulo, Facilities Director and Associate Vice President of Campus Planning remarked, "We were looking for a practical and cost-effective solution to provide needed support for the exterior tiles. Based on my observation of the installation process, the pedestals were relatively easy to install and adjust, providing a consistent level finish flooring elevation."



The CCM renovation project will no doubt empower students to create future games, graphics, films, and media. Some of those ideas will originate or be nudged forward during conversations on the 5000 square foot terrace. Remember, below the porcelain paver surface is another support system that makes those conversations possible.



## Buzon Pedestals International

PRODUCTS TO CREATE SPACES THAT INSPIRE, ENTERTAIN, & BUILD COMMUNITY

Since 1987, Buzon Pedestal International has been the world's leading manufacturer of screwjack polypropylene pedestals. The reputation of BUZON® is the result of extensive experience and a willingness to satisfy the exacting demands of architects, specifiers, designers, and construction professionals around the world. In the US reach Buzon Pedestals at <http://www.buzonusa.us>.