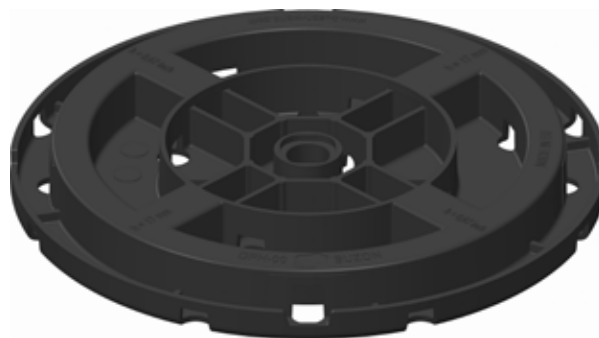
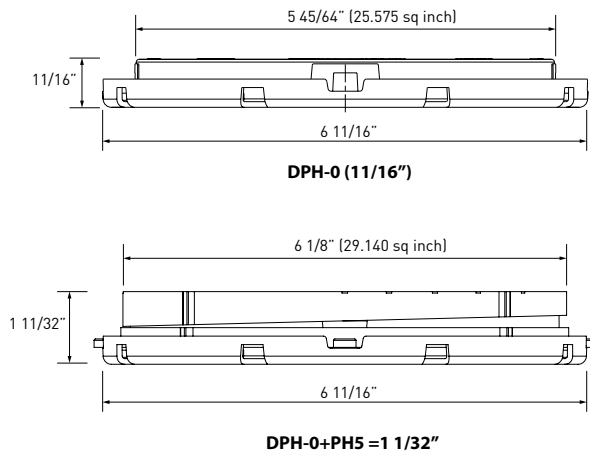


DPH-0 - height 1 1/16"



Height range

11/16", fixed height.

Addition of PH5 slope corrector gives 0-5% slope correction.

Height with PH5: 1 1/32".

Material

Co-polymer polypropylene (CPP), material thickness 1/16" to 13/64".

Composition: 80% CPP **recycled**, 20% talc + UV master batch black, and 100% recyclable.

Dimensions

Base - diameter 6 11/16", surface area 35.185 sq inch.

Top - diameter 5 45/64", surface area 25.575 sq inch.

Performance characteristics

Resistant to aging, poor weather conditions, UV light, almost all chemicals, and rot proof.

Suitable for use in temperatures from -22°F to + 194°F.

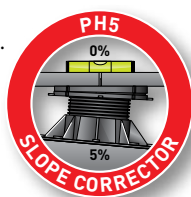
Application

Support for raised decks. Can support any type of timber decking or ceramic, stone, concrete paving or flag material, as well as fibreglass or metal grid panels.

Suitable for any kind of stable substrate, including applications directly over insulation panels.

Slope corrector PH5

Can be simply and quickly fitted to the pedestal. Provides slope correction from 0-5% (in 0.5% increments). Adds 23/64" to the overall height of the pedestal.



Accessories

Spacer tabs: For achieving uniform spaces between used decking material. Available in 1/16, 1/8, 3/16, 1/4, 5/16 and 25/64 Inches. Fixed to top of pedestal by clipping in only. Tab heights: 11/16" or 1" dependent on tile thickness.



Available with tab widths of 1/16, 3/16, 1/4, 5/16 and 25/64 Inches



Available with tab widths of 1/8 and 3/16 Inches

Joist support: Supports timber, aluminium or composite joists for most decking systems.



Joist max. 2 9/16"
Thickness 5/32"

Shim: Enhances acoustic performance and can help leveling uneven paving materials.



1/32" and 1/16" thickness
EPDM -60 Shore

Load capacity (1 daN = 1kg/f = 2.23lb/f)

Tests executed with load bearing on central (1/1), half (1/2) and quarter (1/4) position on the pedestal.

| Position | Load (daN) | Load (lbf) |
|----------|------------|------------|
| 1/1 | 5537 | 12349 |
| 1/2 | 2940 | 6556 |
| 1/4 | 1465 | 3267 |

Safety recommendation for use of Buzon Pedestals System :

1. Areas reserved for pedestrian access : divide the load indicated in the table by 2 with an addition safety factor of -15%.
2. Areas reserved for industrial and technical applications : divide the load indicated in the table by 4 with an addition safety factor of -15%.
3. The BUZON Pedestals System is not designed to support or be subjected to vibrating and/or moving machinery & equipment, including maintenance & cleaning vehicles, automobile & other vehicles, etc...

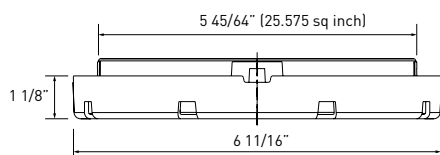


Buzon Pedestal International s.a./n.v.

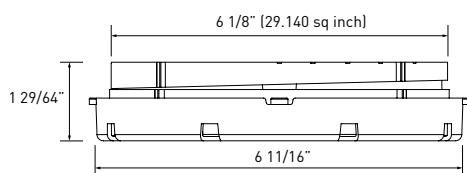
Z.I. des Hauts-Sarts - Prolongement de l'Abbaye, 134 - B-4040 Herstal - Belgique

Tel +32 (0) 4 248 39 83 Fax +32 (0) 4 264 82 38 E-mail info@buzon-world.com www.buzon-world.com

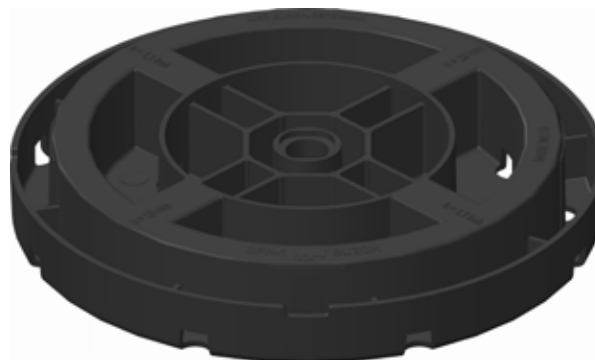
DPH-1 - height 1 1/8"



DPH-1 (28mm)



DPH-1+PH5 (37mm)



Height range

1 1/8", fixed height.

Addition of PH5 slope corrector gives 0-5% slope correction.

Height with PH5: 1 29/64".

Material

Co-polymer polypropylene (CPP), material thickness 1/16" to 13/64".

Composition: 80% CPP **recycled**, 20% talc + UV master batch black, and 100% recyclable.

Base dimensions

Base - diameter 6 11/16", surface area 35.185 sq inch.

Top - diameter 5 45/64", surface area 25.575 sq inch.

Performance characteristics

Resistant to aging, poor weather conditions, UV light, almost all chemicals, and rot proof.

Suitable for use in temperatures from -22°F to + 194°F.

Application

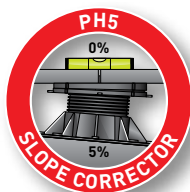
Support for raised decks. Can support any type of timber decking or ceramic, stone, concrete paving or flag material, as well as fibreglass or metal grid panels.

Suitable for any kind of stable substrate, including applications directly over insulation panels.

Slope corrector PH5

Can be simply and quickly fitted to the pedestal. Provides slope correction from

0-5% (in 0.5% increments). Adds 23/64" to the overall height of the pedestal.



Accessories

Spacer tabs: For achieving uniform spaces between used decking material. Available in 1/16, 1/8, 3/16, 1/4, 5/16 and 25/64 Inches.

Fixed to top of pedestal by clipping in only. Tab heights: 11/16" or 1" dependent on tile thickness.



Available with tab widths of 1/16, 3/16, 1/4, 5/16 and 25/64 Inches



Available with tab widths of 1/8 and 3/16 Inches

Joist support: Supports timber, aluminium or composite joists for most decking systems.



Joist max. 2 9/16"
Thickness 5/32"

Shim: Enhances acoustic performance and can help leveling uneven paving materials.



1/32" and 1/16" thickness

EPDM -60 Shore

Load capacity (1 daN = 1kg/f = 2.23lb/f)

Tests executed with load bearing on central (1/1), half (1/2) and quarter (1/4) position on the pedestal.

| Position | Load (daN) | Load (lbf) |
|----------|------------|------------|
| 1/1 | 5225 | 11652 |
| 1/2 | 2410 | 5374 |
| 1/4 | 1362 | 3038 |

Safety recommendation for use of Buzon Pedestals System :

1. Areas reserved for pedestrian access : divide the load indicated in the table by 2 with an addition safety factor of -15%.
2. Areas reserved for industrial and technical applications : divide the load indicated in the table by 4 with an addition safety factor of -15%.
3. The BUZON Pedestals System is not designed to support or be subjected to vibrating and/or moving machinery & equipment, including maintenance & cleaning vehicles, automobile & other vehicles, etc...



Buzon Pedestal International s.a./n.v.

Z.I. des Hauts-Sarts - Prolongement de l'Abbaye, 134 - B-4040 Herstal - Belgique

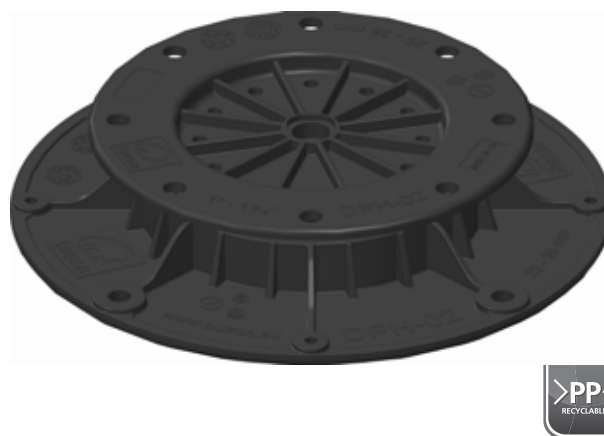
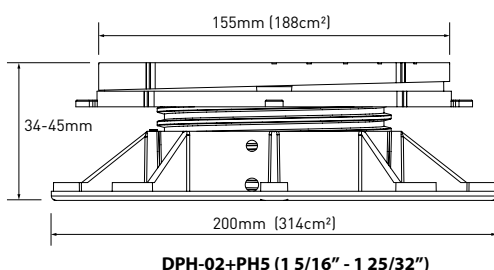
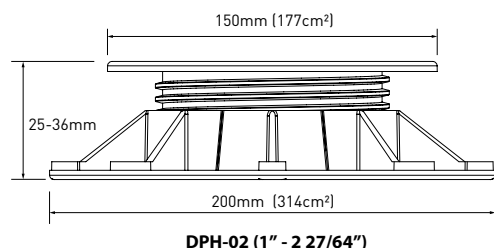
Tel +32 (0) 4 248 39 83

Fax +32 (0) 4 264 82 38

E-mail info@buzon-world.com

www.buzon-world.com

DPH-02 - height 1" - 1 27/64"



Height range

Adjustable uninterrupted from 1" to 1 27/64".
Addition of PH5 slope corrector gives 0-5% slope correction.
Height with PH5: 1 5/16" - 1 25/32".

Composition

The DPH-02 is comprised of 2 components (base and head).

Material

Co-polymer polypropylene (CPP), material thickness 1/16" to 13/64".
Composition: 80% CPP **recycled**, 20% talc + UV master batch black, and 100% recyclable.

Dimensions

Top - diameter 5 29/32", surface area 27.435 sq inch.

Base - diameter 7 7/8", surface area 48.670 sq inch.

Performance characteristics

Resistant to aging, poor weather conditions, UV light, almost all chemicals, and rot proof.

Suitable for use in temperatures from -22°F to + 194°F.

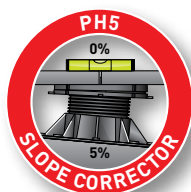
Application

Support for raised decks. Can support any type of timber decking or ceramic, stone, concrete paving or flag material, as well as fibreglass or metal grid panels.

Suitable for any kind of stable substrate, including applications directly over insulation panels.

Slope corrector PH5

Can be simply and quickly fitted to the pedestal.
Provides slope correction from 0-5% (in 0.5% increments). Adds 23/64" to the overall height of the pedestal.

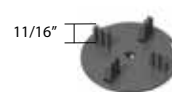


Accessories

Spacer tabs: For achieving uniform spaces between used decking material. Available in 1/16, 1/8, 3/16, 1/4, 5/16 and 25/64 Inches. Fixed to top of pedestal by clipping in only. Tab heights: 11/16" or 1" dependent on tile thickness.



Available with tab widths of 1/16, 3/16, 1/4, 5/16 and 25/64 Inches



Available with tab widths of 1/8 and 3/16 Inches

Joist support: Supports timber, aluminium or composite joists for most decking systems.



Joist max. 2 9/16"
Thickness 5/32"

Shim: Enhances acoustic performance and can help leveling uneven paving materials.



1/32" and 1/16" thickness

EPDM -60 Shore

Load capacity (l daN = 1kg/f = 2.23lb/f)

Tests executed with load bearing on central (1/1), half (1/2) and quarter (1/4) position on the pedestal.

| Position | Height (Inch) | Load (daN) | Load (lbf) |
|----------|---------------|------------|------------|
| 1/1 | 1 27/64 | 1183 | 2639 |
| 1/2 | 1 27/64 | 678 | 1513 |
| 1/4 | 1 27/64 | 420 | 937 |

Safety recommendation for use of Buzon Pedestals System :

1. Areas reserved for pedestrian access : divide the load indicated in the table by 2 with an addition safety factor of -15%.
2. Areas reserved for industrial and technical applications : divide the load indicated in the table by 4 with an addition safety factor of -15%.
3. The BUZON Pedestals System is not designed to support or be subjected to vibrating and/or moving machinery & equipment, including maintenance & cleaning vehicles, automobile & other vehicles, etc...

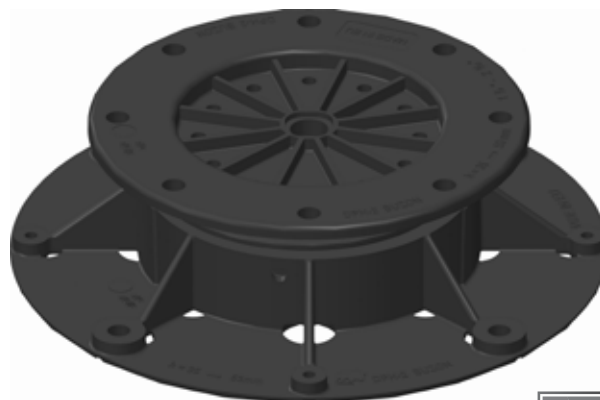
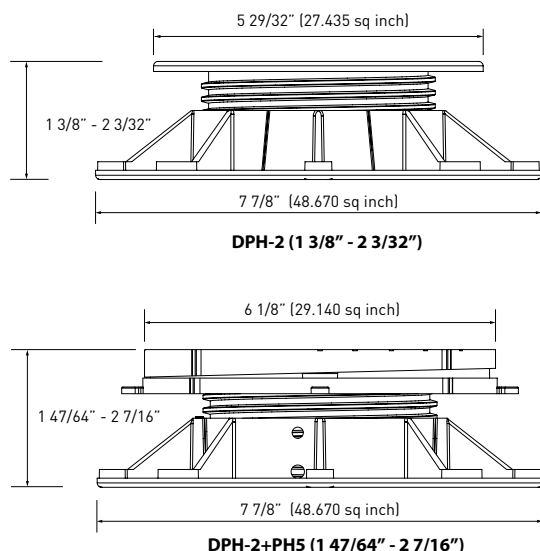


Buzon Pedestal International s.a./n.v.

Z.I. des Hauts-Sarts - Prolongement de l'Abbaye, 134 - B-4040 Herstal - Belgique

Tel +32 (0) 4 248 39 83 Fax +32 (0) 4 264 82 38 E-mail info@buzon-world.com www.buzon-world.com

DPH-2 - height 1 3/8" - 2 3/32"



Height range

Adjustable uninterrupted from 1 3/8" to 2 3/32".
Addition of PH5 slope corrector gives 0-5% slope correction.
Height with PH5: 1 47/64" - 2 7/16".

Composition

The DPH-2 is comprised of 2 components (base and head).

Material

Co-polymer polypropylene (CPP), material thickness 1/16" to 13/64".
Composition: 80% CPP **recycled**, 20% talc + UV master batch black, and 100% recyclable.

Dimensions

Top - diameter 5 29/32", surface area 27.435 sq inch.
Base - diameter 7 7/8", surface area 48.670 sq inch.

Performance characteristics

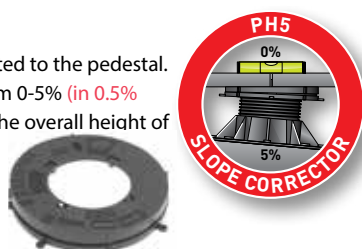
Resistant to aging, poor weather conditions, UV light, almost all chemicals, and rot proof.
Suitable for use in temperatures from -22°F to + 194°F.

Application

Support for raised decks. Can support any type of timber decking or ceramic, stone, concrete paving or flag material, as well as fibreglass or metal grid panels.
Suitable for any kind of stable substrate, including applications directly over insulation panels.

Slope corrector PH5

Can be simply and quickly fitted to the pedestal.
Provides slope correction from 0-5% (in 0.5% increments). Adds 23/64" to the overall height of the pedestal.



Accessories

Spacer tabs: For achieving uniform spaces between used decking material. Available in 1/16, 1/8, 3/16, 1/4, 5/16 and 25/64 Inches. Fixed to top of pedestal by clipping in only. Tab heights: 11/16" or 1" dependent on tile thickness.



Available with tab widths of 1/16, 3/16, 1/4, 5/16 and 25/64 Inches



Available with tab widths of 1/8 and 3/16 Inches

Joist support: Supports timber, aluminium or composite joists for most decking systems.



Joist max. 2 9/16"
Thickness 5/32"

Shim: Enhances acoustic performance and can help leveling uneven paving materials.



1/32" and 1/16" thickness

EPDM -60 Shore

Load capacity (1 daN = 1kg/f = 2.23lb/f)

Tests executed with load bearing on central (1/1), half (1/2) and quarter (1/4) position on the pedestal.

| Position | Height (Inch) | Load (daN) | Load (lbf) |
|----------|---------------|------------|------------|
| 1/1 | 2 1/16 | 1382 | 3083 |
| 1/2 | 2 1/16 | 855 | 1973 |
| 1/4 | 2 1/16 | 412 | 920 |

Safety recommendation for use of Buzon Pedestals System :

1. Areas reserved for pedestrian access : divide the load indicated in the table by 2 with an addition safety factor of -15%.
2. Areas reserved for industrial and technical applications : divide the load indicated in the table by 4 with an addition safety factor of -15%.
3. The BUZON Pedestals System is not designed to support or be subjected to vibrating and/or moving machinery & equipment, including maintenance & cleaning vehicles, automobile & other vehicles, etc...

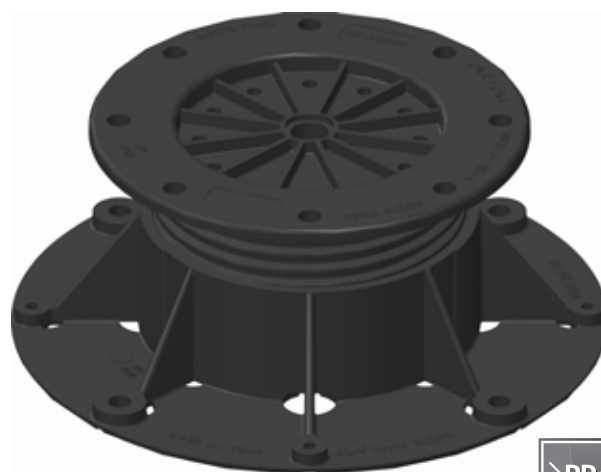
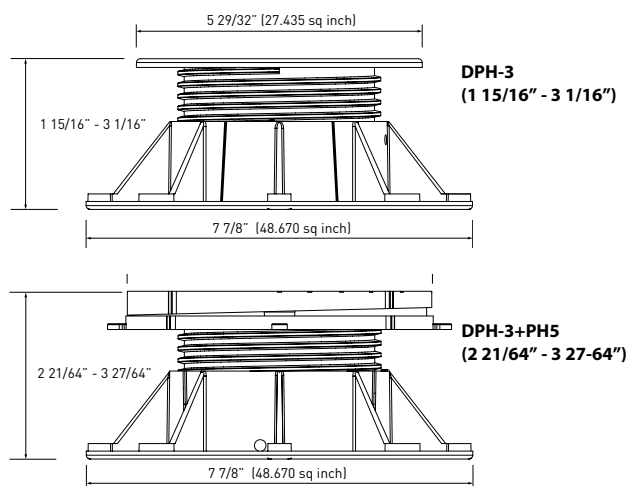


Buzon Pedestal International s.a./n.v.

Z.I. des Hauts-Sarts - Prolongement de l'Abbaye, 134 - B-4040 Herstal - Belgique

Tel +32 (0) 4 248 39 83 Fax +32 (0) 4 264 82 38 E-mail info@buzon-world.com www.buzon-world.com

DPH-3 - height 1 15/16" - 3 1/16"



Height range

Adjustable uninterrupted from 1 15/16" to 3 1/16".
Addition of PH5 slope corrector gives 0-5% slope correction.
Height with PH5: 2 21/64" - 3 27/64".

Composition

The DPH-3 is comprised of 2 components (base and head).

Material

Co-polymer polypropylene (CPP), material thickness 1/16" to 13/64".
Composition: 80% CPP **recycled**, 20% talc + UV master batch black, and 100% recyclable.

Dimensions

Top - diameter 5 29/32", surface area 27.435 sq inch.

Base - diameter 7 7/8", surface area 48.670 sq inch.

Performance characteristics

Resistant to aging, poor weather conditions, UV light, almost all chemicals, and rot proof.

Suitable for use in temperatures from -22°F to + 194°F.

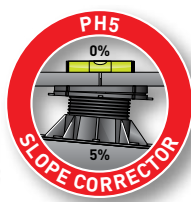
Application

Support for raised decks. Can support any type of timber decking or ceramic, stone, concrete paving or flag material, as well as fibreglass or metal grid panels.

Suitable for any kind of stable substrate, including applications directly over insulation panels.

Slope corrector PH5

Can be simply and quickly fitted to the pedestal.
Provides slope correction from 0-5% (in 0.5% increments). Adds 23/64" to the overall height of the pedestal.

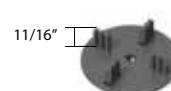


Accessories

Spacer tabs: For achieving uniform spaces between used decking material. Available in 1/16, 1/8, 3/16, 1/4, 5/16 and 25/64 Inches. Fixed to top of pedestal by clipping in only. Tab heights: 11/16" or 1" dependent on tile thickness.



Available with tab widths of 1/16, 3/16, 1/4, 5/16 and 25/64 Inches



Available with tab widths of 1/8 and 3/16 Inches

Joist support: Supports timber, aluminium or composite joists for most decking systems.



Joist max. 2 9/16"
Thickness 5/32"

Shim: Enhances acoustic performance and can help leveling uneven paving materials.



1/32" and 1/16" thickness

EPDM -60 Shore

Load capacity (1 daN = 1kg/f = 2.23lb/f)

Tests executed with load bearing on central (1/1), half (1/2) and quarter (1/4) position on the pedestal.

| Position | Height (Inch) | Load (daN) | Load (lbf) |
|----------|---------------|------------|------------|
| 1/1 | 3 1/16 | 1237 | 2760 |
| 1/2 | 3 1/16 | 812 | 1812 |
| 1/4 | 3 1/16 | 395 | 881 |

Safety recommendation for use of Buzon Pedestals System :

1. Areas reserved for pedestrian access : divide the load indicated in the table by 2 with an addition safety factor of -15%.
2. Areas reserved for industrial and technical applications : divide the load indicated in the table by 4 with an addition safety factor of -15%.
3. The BUZON Pedestals System is not designed to support or be subjected to vibrating and/or moving machinery & equipment, including maintenance & cleaning vehicles, automobile & other vehicles, etc...

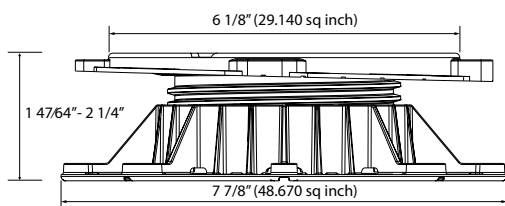


Buzon Pedestal International s.a./n.v.

Z.I. des Hauts-Sarts - Prolongement de l'Abbaye, 134 - B-4040 Herstal - Belgique

Tel +32 (0) 4 248 39 83 Fax +32 (0) 4 264 82 38 E-mail info@buzon-world.com www.buzon-world.com

DPH-2-PH5 - height 1 47/64" - 2 1/4"



Height range

Adjustable uninterrupted from 1 47/64" to 2 1/4" with slope correction of 0-5%.

Composition

The DPH-2-PH5 is comprised of 3 components (base, head and slope corrector).

Material

Co-polymer polypropylene (CPP), material thickness 1/16" to 13/64".

Composition: 80% CPP **recycled**, 20% talc + UV master batch black, and 100% recyclable.

Dimensions

Top - diameter 6 1/8", surface area 29.140 sq inch.

Base - diameter 7 7/8", surface area 48.670 sq inch.

Performance characteristics

Resistant to aging, poor weather conditions, UV light, almost all chemicals, and rot proof.

Suitable for use in temperatures from -22°F to + 194°F.

Application

Support for raised decks. Can support any type of timber decking or ceramic, stone, concrete paving or flag material, as well as fibreglass or metal grid panels.

Suitable for any kind of stable substrate, including applications directly over insulation panels.

Integral slope corrector

Pre-integrated in the head of the pedestal.

Provides slope correction from 0-5%

(in 0.5% increments).

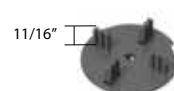


Accessories

Spacer tabs: For achieving uniform spaces between used decking material. Available in 1/16, 1/8, 3/16, 1/4, 5/16 and 25/64 Inches. Fixed to top of pedestal by clipping in only. Tab heights: 11/16" or 1" dependent on tile thickness.



Available with tab widths of 1/16, 3/16, 1/4, 5/16 and 25/64 Inches



Available with tab widths of 1/8 and 3/16 Inches

Joist support: Supports timber, aluminium or composite joists for most decking systems.



Joist max. 2 9/16" Thickness 5/32"

Shim: Enhances acoustic performance and can help leveling uneven paving materials.



1/32" and 1/16" thickness
EPDM -60 Shore

Load capacity (1 daN = 1kg/f = 2.23lb/f)

Tests executed with load bearing on central (1/1), half (1/2) and quarter (1/4) position on the pedestal.

| Position | Height (inch) | Slope | Load (daN) | Load (lbf) |
|----------|---------------|-------|------------|------------|
| 1/1 | 2 1/4" | 5% | 1541 | 3436 |
| 1/2 | 2 1/4" | 5% | 976 | 2176 |
| 1/4 | 2 1/4" | 5% | 490 | 1093 |

Safety recommendation for use of Buzon Pedestals System :

1. Areas reserved for pedestrian access : divide the load indicated in the table by 2 with an addition safety factor of -15%.
2. Areas reserved for industrial and technical applications : divide the load indicated in the table by 4 with an addition safety factor of -15%.
3. The BUZON Pedestals System is not designed to support or be subjected to vibrating and/or moving machinery & equipment, including maintenance & cleaning vehicles, automobile & other vehicles, etc...

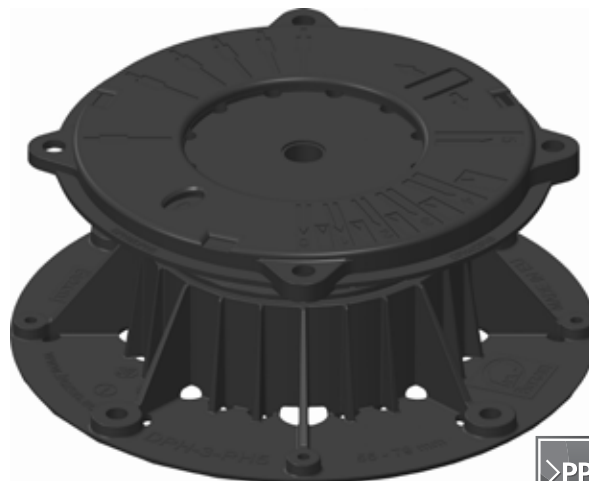
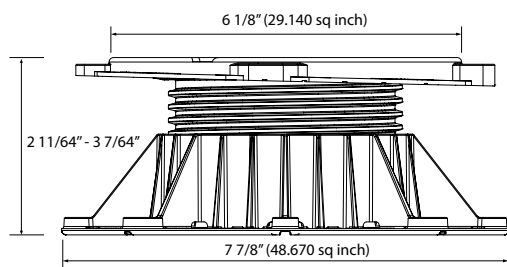


Buzon Pedestal International s.a./n.v.

Z.I. des Hauts-Sarts - Prolongement de l'Abbaye, 134 - B-4040 Herstal - Belgique

Tel +32 (0) 4 248 39 83 Fax +32 (0) 4 264 82 38 E-mail info@buzon-world.com www.buzon-world.com

DPH-3-PH5 - height 2 11/64" - 3 7/64"



Height range

Adjustable uninterrupted from 2 11/64" to 3 7/64" with slope correction of 0-5%.

Composition

The DPH-3-PH5 is comprised of 3 components (base, head and slope corrector).

Material

Co-polymer polypropylene (CPP), material thickness 1/16" to 13/64".
Composition: 80% CPP **recycled**, 20% talc + UV master batch black, and 100% recyclable.

Dimensions

Top - diameter 6 1/8", surface area 29.140 sq inch.

Base - diameter 7 7/8", surface area 48.670 sq inch.

Performance characteristics

Resistant to aging, poor weather conditions, UV light, almost all chemicals, and rot proof.

Suitable for use in temperatures from -22°F to + 194°F.

Application

Support for raised decks. Can support any type of timber decking or ceramic, stone, concrete paving or flag material, as well as fibreglass or metal grid panels.

Suitable for any kind of stable substrate, including applications directly over insulation panels.

Integral slope corrector

Pre-integrated in the head of the pedestal.

Provides slope correction from 0-5%

(in 0.5% increments).

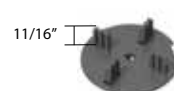


Accessories

Spacer tabs: For achieving uniform spaces between used decking material. Available in 1/16, 1/8, 3/16, 1/4, 5/16 and 25/64 Inches. Fixed to top of pedestal by clipping in only. Tab heights: 11/16" or 1" dependent on tile thickness.



Available with tab widths of 1/16, 3/16, 1/4, 5/16 and 25/64 Inches



Available with tab widths of 1/8 and 3/16 Inches

Joist support: Supports timber, aluminium or composite joists for most decking systems.



Joist max. 2 9/16"
Thickness 5/32"

Shim: Enhances acoustic performance and can help leveling uneven paving materials.



1/32" and 1/16" thickness
EPDM -60 Shore

Load capacity (1 daN = 1kg/f = 2.23lb/f)

Tests executed with load bearing on central (1/1), half (1/2) and quarter (1/4) position on the pedestal.

| Position | Height (mm) | Slope | Load (daN) | Load (lbf) |
|----------|-------------|-------|------------|------------|
| 1/1 | 3 7/64" | 5% | 1439 | 3208 |
| 1/2 | 3 7/64" | 5% | 972 | 2168 |
| 1/4 | 3 7/64" | 5% | 518 | 1154 |

Safety recommendation for use of Buzon Pedestals System :

1. Areas reserved for pedestrian access : divide the load indicated in the table by 2 with an addition safety factor of -15%.
2. Areas reserved for industrial and technical applications : divide the load indicated in the table by 4 with an addition safety factor of -15%.
3. The BUZON Pedestals System is not designed to support or be subjected to vibrating and/or moving machinery & equipment, including maintenance & cleaning vehicles, automobile & other vehicles, etc...

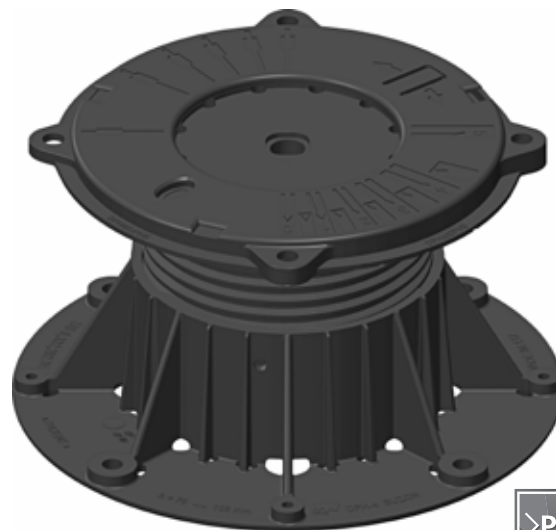
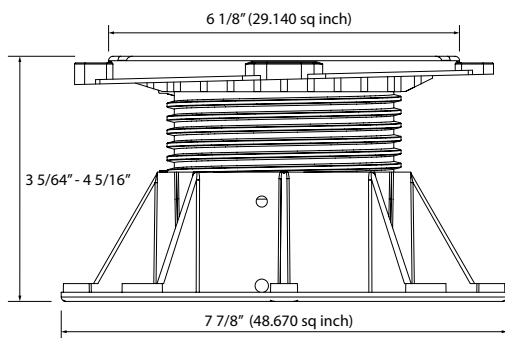


Buzon Pedestal International s.a./n.v.

Z.I. des Hauts-Sarts - Prolongement de l'Abbaye, 134 - B-4040 Herstal - Belgique

Tel +32 (0) 4 248 39 83 Fax +32 (0) 4 264 82 38 E-mail info@buzon-world.com www.buzon-world.com

DPH-4-PH5 - height 3 5/64" - 4 5/16"



Height range

Adjustable uninterrupted from 3 5/64" to 4 5/16" with slope correction of 0-5%.

Composition

The DPH-4-PH5 is comprised of 3 components (base, head and slope corrector).

Material

Co-polymer polypropylene (CPP), material thickness 1/16" to 13/64".

Composition: 80% CPP **recycled**, 20% talc + UV master batch black, and 100% recyclable.

Dimensions

Top - diameter 6 1/8", surface area 29.140 sq inch.

Base - diameter 7 7/8", surface area 48.670 sq inch.

Performance characteristics

Resistant to aging, poor weather conditions, UV light, almost all chemicals, and rot proof.

Suitable for use in temperatures from -22°F to + 194°F.

Application

Support for raised decks. Can support any type of timber decking or ceramic, stone, concrete paving or flag material, as well as fibreglass or metal grid panels.

Suitable for any kind of stable substrate, including applications directly over insulation panels.

Integral slope corrector

Pre-integrated in the head of the pedestal.

Provides slope correction from 0-5%

(in 0.5% increments).

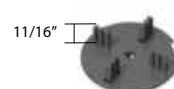


Accessories

Spacer tabs: For achieving uniform spaces between used decking material. Available in 1/16, 1/8, 3/16, 1/4, 5/16 and 25/64 Inches. Fixed to top of pedestal by clipping in only. Tab heights: 11/16" or 1" dependent on tile thickness.



Available with tab widths of 1/16, 3/16, 1/4, 5/16 and 25/64 Inches



Available with tab widths of 1/8 and 3/16 Inches

Joist support: Supports timber, aluminium or composite joists for most decking systems.



Joist max. 2 9/16" Thickness 5/32"

Shim: Enhances acoustic performance and can help leveling uneven paving materials.



1/32" and 1/16" thickness
EPDM -60 Shore

Load capacity (1 daN = 1kg/f = 2.23lb/f)

Tests executed with load bearing on central (1/1), half (1/2) and quarter (1/4) position on the pedestal.

| Position (lbf) | Height (Inch) | Slope | Load (daN) | Load |
|----------------|---------------|-------|------------|------|
| 1/1 | 4 5/16 | 5% | 1555 | 3468 |
| 1/2 | 4 5/16 | 5% | 1055 | 2352 |
| 1/4 | 4 5/16 | 5% | 625 | 1394 |

Safety recommendation for use of Buzon Pedestals System :

1. Areas reserved for pedestrian access : divide the load indicated in the table by 2 with an addition safety factor of -15%.
2. Areas reserved for industrial and technical applications : divide the load indicated in the table by 4 with an addition safety factor of -15%.
3. The BUZON Pedestals System is not designed to support or be subjected to vibrating and/or moving machinery & equipment, including maintenance & cleaning vehicles, automobile & other vehicles, etc...



Buzon Pedestal International s.a./n.v.

Z.I. des Hauts-Sarts - Prolongement de l'Abbaye, 134 - B-4040 Herstal - Belgique

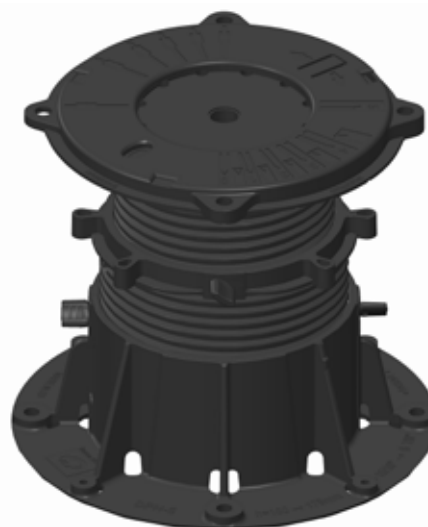
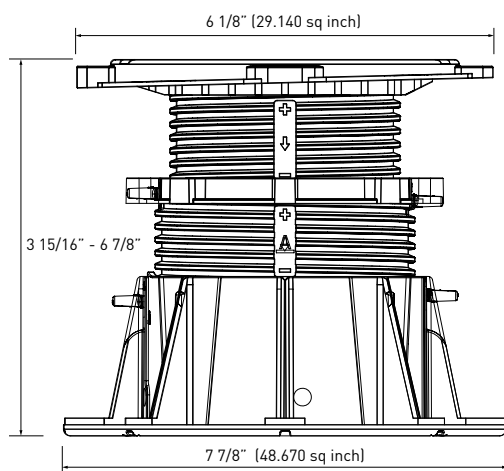
Tel +32 (0) 4 248 39 83

Fax +32 (0) 4 264 82 38

E-mail info@buzon-world.com

www.buzon-world.com

DPH-5-PH5 - height 3 15/16" - 6 7/8"



Keys: security locking key to fix pedestal at the height required.



Height range

Adjustable uninterrupted from 3 15/16" to 6 7/8" with slope correction of 0-5%.

Composition

The DPH-5-PH5 is comprised of 4 components (base, head, slope corrector and adjustment ring) and 4 security locking keys.

Material

Co-polymer polypropylene (CPP), material thickness 1/16" to 13/64".
Composition: 80% CPP **recycled**, 20% talc + UV master batch black, and 100% recyclable.

Dimensions

Top - diameter 6 1/8", surface area 29.140 sq inch.

Base - diameter 7 7/8", surface area 48.670 sq inch.

Performance characteristics

Resistant to aging, poor weather conditions, UV light, almost all chemicals, and rot proof.

Suitable for use in temperatures from -22°F to + 194°F.

Application

Support for raised decks. Can support any type of timber decking or ceramic, stone, concrete paving or flag material, as well as fibreglass or metal grid panels.

Suitable for any kind of stable substrate, including applications directly over insulation panels.

Integral slope corrector

Pre-integrated in the head of the pedestal.

Provides slope correction from 0-5%

(in 0.5% increments).

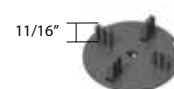


Accessories

Spacer tabs: For achieving uniform spaces between used decking material. Available in 1/16, 1/8, 3/16, 1/4, 5/16 and 25/64 Inches. Fixed to top of pedestal by clipping in only. Tab heights: 11/16" or 1" dependent on tile thickness.



Available with tab widths of 1/16, 3/16, 1/4, 5/16 and 25/64 Inches



Available with tab widths of 1/8 and 3/16 Inches

Joist support: Supports timber, aluminium or composite joists for most decking systems.



Joist max. 2 9/16"
Thickness 5/32"

Shim: Enhances acoustic performance and can help leveling uneven paving materials.



1/32" and 1/16" thickness
EPDM -60 Shore

Load capacity (1 daN = 1kg/f = 2.23lb/f)

Tests executed with load bearing on central (1/1), half (1/2) and quarter (1/4) position on the pedestal.

| Position | Height (Inch) | Slope | Load (daN) | Load (lbf) |
|----------|---------------|-------|------------|------------|
| 1/1 | 6 7/8 | 5% | 1690 | 3768 |
| 1/2 | 6 7/8 | 5% | 1205 | 2687 |
| 1/4 | 6 7/8 | 5% | 862 | 1923 |

Safety recommendation for use of Buzon Pedestals System :

1. Areas reserved for pedestrian access : divide the load indicated in the table by 2 with an addition safety factor of -15%.
2. Areas reserved for industrial and technical applications : divide the load indicated in the table by 4 with an addition safety factor of -15%.
3. The BUZON Pedestals System is not designed to support or be subjected to vibrating and/or moving machinery & equipment, including maintenance & cleaning vehicles, automobile & other vehicles, etc...

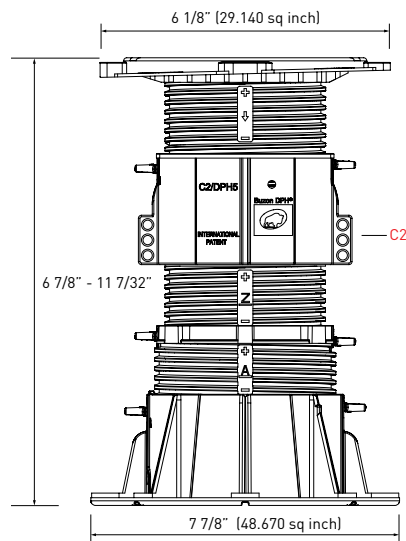


Buzon Pedestal International s.a./n.v.

Z.I. des Hauts-Sarts - Prolongement de l'Abbaye, 134 - B-4040 Herstal - Belgique

Tel +32 (0) 4 248 39 83 Fax +32 (0) 4 264 82 38 E-mail info@buzon-world.com www.buzon-world.com

DPH-6-PH5 - height 6 7/8" - 11 7/32"



Keys: security locking key to fix pedestal at the height required.



Height range

Adjustable uninterrupted from 6 7/8" to 11 7/32" with slope correction of 0-5%.

Composition

DPH-5-PH5 pedestal plus 1 coupler (DPH-C2) and 6 security locking keys.

Material

Co-polymer polypropylene (CPP), material thickness 1/16" to 13/64".
Composition: 80% CPP **recycled**, 20% talc + UV master batch black, and 100% recyclable.

Dimensions

Top - diameter 6 1/8", surface area 29.140 sq inch.

Base - diameter 7 7/8", surface area 48.670 sq inch.

Performance characteristics

Resistant to aging, poor weather conditions, UV light, almost all chemicals, and rot proof.

Suitable for use in temperatures from -22°F to + 194°F.

Application

Support for raised decks. Can support any type of timber decking or ceramic, stone, concrete paving or flag material, as well as fibreglass or metal grid panels.

Suitable for any kind of stable substrate, including applications directly over insulation panels.

Integral slope corrector

Pre-integrated in the head of the pedestal.

Provides slope correction from 0-5%

(in 0.5% increments).



Accessories

Spacer tabs: For achieving uniform spaces between used decking material. Available in 1/16, 1/8, 3/16, 1/4, 5/16 and 25/64 Inches. Fixed to top of pedestal by clipping in only. Tab heights: 11/16" or 1" dependent on tile thickness.



Available with tab widths of 1/16, 3/16, 1/4, 5/16 and 25/64 Inches

Available with tab widths of 1/8 and 3/16 Inches

Joist support: Supports timber, aluminium or composite joists for most decking systems.



Joist max. 2 9/16"
Thickness 5/32"

Shim: Enhances acoustic performance and can help leveling uneven paving materials.



1/32" and 1/16" thickness

EPDM -60 Shore

Load capacity (1 daN = 1kg/f = 2.23lb/f)

Tests executed with load bearing on central (1/1), half (1/2) and quarter (1/4) position on the pedestal.

| Position (lbf) | Height (Inch) | Slope | Load (daN) | Load |
|----------------|---------------|-------|------------|------|
| 1/1 | 11 7/32 | 0% | 1542 | 3439 |
| 1/2 | 11 7/32 | 0% | 1190 | 2653 |
| 1/4 | 11 7/32 | 0% | 722 | 1611 |

Safety recommendation for use of Buzon Pedestals System :

1. Areas reserved for pedestrian access : divide the load indicated in the table by 2 with an addition safety factor of -15%.
2. Areas reserved for industrial and technical applications : divide the load indicated in the table by 4 with an addition safety factor of -15%.
3. The BUZON Pedestals System is not designed to support or be subjected to vibrating and/or moving machinery & equipment, including maintenance & cleaning vehicles, automobile & other vehicles, etc...

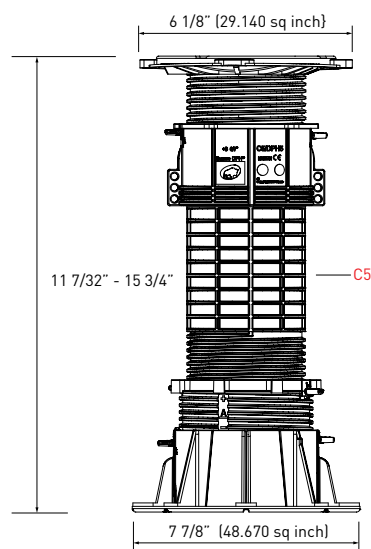


Buzon Pedestal International s.a./n.v.

Z.I. des Hauts-Sarts - Prolongement de l'Abbaye, 134 - B-4040 Herstal - Belgique

Tel +32 (0) 4 248 39 83 Fax +32 (0) 4 264 82 38 E-mail info@buzon-world.com www.buzon-world.com

DPH-7-PH5 - height 11 7/32" - 15 3/4"



Keys: security locking key to fix pedestal at the height required.



Height range

Adjustable uninterrupted from 11 7/32" to 15 3/4" with slope correction of 0-5%.

Composition

DPH-5-PH5 pedestal plus 1 x coupler (DPH-C5) and 6 security locking keys.

Material

Co-polymer polypropylene (CPP), material thickness 1/16" to 13/64".
Composition: 80% CPP **recycled**, 20% talc + UV master batch black, and 100% recyclable.

Dimensions

Top - diameter 6 1/8", surface area 29.140 sq inch.

Base - diameter 7 7/8", surface area 48.670 sq inch.

Performance characteristics

Resistant to aging, poor weather conditions, UV light, almost all chemicals, and rot proof.

Suitable for use in temperatures from -22°F to + 194°F.

Application

Support for raised decks. Can support any type of timber decking or ceramic, stone, concrete paving or flag material, as well as fibreglass or metal grid panels.

Suitable for any kind of stable substrate, including applications directly over insulation panels.

Integral slope corrector

Pre-integrated in the head of the pedestal.

Provides slope correction from 0-5%

(in 0.5% increments).

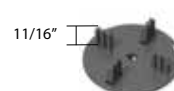


Accessories

Spacer tabs: For achieving uniform spaces between used decking material. Available in 1/16, 1/8, 3/16, 1/4, 5/16 and 25/64 Inches. Fixed to top of pedestal by clipping in only. Tab heights: 11/16" or 1" dependent on tile thickness.



Available with tab widths of 1/16, 3/16, 1/4, 5/16 and 25/64 Inches



Available with tab widths of 1/8 and 3/16 Inches

Joist support: Supports timber, aluminium or composite joists for most decking systems.



Joist max. 2 9/16"
Thickness 5/32"

Shim: Enhances acoustic performance and can help leveling uneven paving materials.



1/32" and 1/16" thickness

EPDM -60 Shore

Load capacity (1 daN = 1kg/f = 2.23lb/f)

Tests executed with load bearing on central (1/1), half (1/2) and quarter (1/4) position on the pedestal.

| Position (lbf) | Height (Inch) | Slope | Load (daN) | Load |
|----------------|---------------|-------|------------|------|
| 1/1 | 15 3/4 | 0% | 1315 | 2932 |
| 1/2 | 15 3/4 | 0% | 937 | 2089 |
| 1/4 | 15 3/4 | 0% | 595 | 1327 |

Safety recommendation for use of Buzon Pedestals System :

1. Areas reserved for pedestrian access : divide the load indicated in the table by 2 with an addition safety factor of -15%.
2. Areas reserved for industrial and technical applications : divide the load indicated in the table by 4 with an addition safety factor of -15%.
3. The BUZON Pedestals System is not designed to support or be subjected to vibrating and/or moving machinery & equipment, including maintenance & cleaning vehicles, automobile & other vehicles, etc...

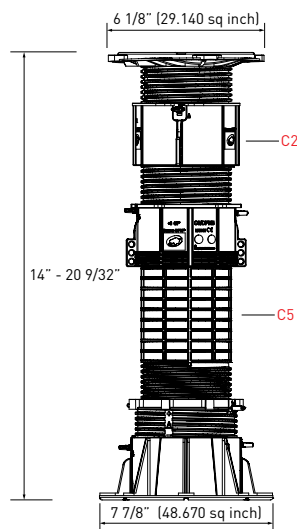


Buzon Pedestal International s.a./n.v.

Z.I. des Hauts-Sarts - Prolongement de l'Abbaye, 134 - B-4040 Herstal - Belgique

Tel +32 (0) 4 248 39 83 Fax +32 (0) 4 264 82 38 E-mail info@buzon-world.com www.buzon-world.com

DPH-8-PH5 - height 14" - 20 9/32"



Keys: security locking key to fix pedestal at the height required.



Height range

Adjustable uninterrupted from 14" to 20 9/32" with slope correction of 0-5%.

Composition

DPH-5-PH5 pedestal plus 2 x couplers (DPH-C2+DPH-C5) and 8 security locking keys.

Material

Co-polymer polypropylene (CPP), material thickness 1/16" to 13/64".
Composition: 80% CPP **recycled**, 20% talc + UV master batch black, and 100% recyclable.

Dimensions

Top - diameter 6 1/8", surface area 29.140 sq inch.

Base - diameter 7 7/8", surface area 48.670 sq inch.

Performance characteristics

Resistant to aging, poor weather conditions, UV light, almost all chemicals, and rot proof.

Suitable for use in temperatures from -22°F to + 194°F.

Application

Support for raised decks. Can support any type of timber decking or ceramic, stone, concrete paving or flag material, as well as fibreglass or metal grid panels.

Suitable for any kind of stable substrate, including applications directly over insulation panels.

Integral slope corrector

Pre-integrated in the head of the pedestal.

Provides slope correction from 0-5%

(in 0.5% increments).

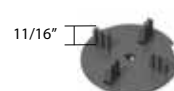


Accessories

Spacer tabs: For achieving uniform spaces between used decking material. Available in 1/16, 1/8, 3/16, 1/4, 5/16 and 25/64 Inches. Fixed to top of pedestal by clipping in only. Tab heights: 11/16" or 1" dependent on tile thickness.



Available with tab widths of 1/16, 3/16, 1/4, 5/16 and 25/64 Inches



Available with tab widths of 1/8 and 3/16 Inches

Joist support: Supports timber, aluminium or composite joists for most decking systems.



Joist max. 2 9/16"
Thickness 5/32"

Shim: Enhances acoustic performance and can help leveling uneven paving materials.



1/32" and 1/16" thickness

EPDM -60 Shore

Load capacity (I daN = 1kg/f = 2.23lb/f)

Tests executed with load bearing on central (1/1), half (1/2) and quarter (1/4) position on the pedestal.

| Position (lbf) | Height (Inch) | Slope | Load (daN) | Load |
|----------------|---------------|-------|------------|------|
| 1/1 | 20 9/32 | 0% | 1263 | 2817 |
| 1/2 | 20 9/32 | 0% | 880 | 1962 |
| 1/4 | 20 9/32 | 0% | 532 | 1186 |

Safety recommendation for use of Buzon Pedestals System :

1. Areas reserved for pedestrian access : divide the load indicated in the table by 2 with an addition safety factor of -15%.
2. Areas reserved for industrial and technical applications : divide the load indicated in the table by 4 with an addition safety factor of -15%.
3. The BUZON Pedestals System is not designed to support or be subjected to vibrating and/or moving machinery & equipment, including maintenance & cleaning vehicles, automobile & other vehicles, etc...

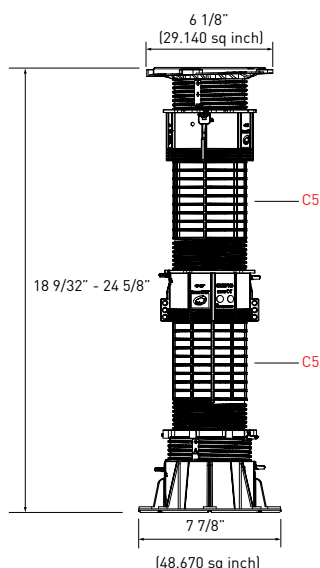


Buzon Pedestal International s.a./n.v.

Z.I. des Hauts-Sarts - Prolongement de l'Abbaye, 134 - B-4040 Herstal - Belgique

Tel +32 (0) 4 248 39 83 Fax +32 (0) 4 264 82 38 E-mail info@buzon-world.com www.buzon-world.com

DPH-9-PH5 - height 18 9/32" - 24 5/8"



Keys: security locking key to fix pedestal at the height required.



Height range

Adjustable uninterrupted from 18 9/32" to 24 5/8" with slope correction of 0-5%.

Composition

DPH-5-PH5 pedestal plus 2 x couplers (DPH-C5) and 8 security locking keys.

Material

Co-polymer polypropylene (CPP), material thickness 1/16" to 13/64".

Composition: 80% CPP **recycled**, 20% talc + UV master batch black, and 100% recyclable.

Dimensions

Top - diameter 6 1/8", surface area 29.140 sq inch.

Base - diameter 7 7/8", surface area 48.670 sq inch.

Performance characteristics

Resistant to aging, poor weather conditions, UV light, almost all chemicals, and rot proof.

Suitable for use in temperatures from -22°F to + 194°F.

Application

Support for raised decks. Can support any type of timber decking or ceramic, stone, concrete paving or flag material, as well as fibreglass or metal grid panels.

Suitable for any kind of stable substrate, including applications directly over insulation panels.

Integral slope corrector

Pre-integrated in the head of the pedestal.

Provides slope correction from 0-5%

(in 0.5% increments).



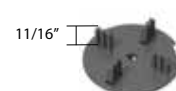
Accessories

Spacer tabs: For achieving uniform spaces between used decking material. Available in 1/16, 1/8, 3/16, 1/4, 5/16 and 25/64 Inches.

Fixed to top of pedestal by clipping in only. Tab heights: 11/16" or 1" dependent on tile thickness.



Available with tab widths of 1/16, 3/16, 1/4, 5/16 and 25/64 Inches



Available with tab widths of 1/8 and 3/16 Inches

Joist support: Supports timber, aluminium or composite joists for most decking systems.



Joist max. 2 9/16" Thickness 5/32"

Shim: Enhances acoustic performance and can help leveling uneven paving materials.



1/32" and 1/16" thickness

EPDM -60 Shore

Load capacity (1 daN = 1kg/f = 2.23lb/f)

Tests executed with load bearing on central (1/1), half (1/2) and quarter (1/4) position on the pedestal.

| Position (lbf) | Height (Inch) | Slope | Load (daN) | Load |
|----------------|---------------|-------|------------|------|
| 1/1 | 24 5/8 | 0% | 1307 | 2914 |
| 1/2 | 24 5/8 | 0% | 897 | 2000 |
| 1/4 | 24 5/8 | 0% | 562 | 1253 |

Safety recommendation for use of Buzon Pedestals System :

1. Areas reserved for pedestrian access : divide the load indicated in the table by 2 with an addition safety factor of -15%.
2. Areas reserved for industrial and technical applications : divide the load indicated in the table by 4 with an addition safety factor of -15%.
3. The BUZON Pedestals System is not designed to support or be subjected to vibrating and/or moving machinery & equipment, including maintenance & cleaning vehicles, automobile & other vehicles, etc...

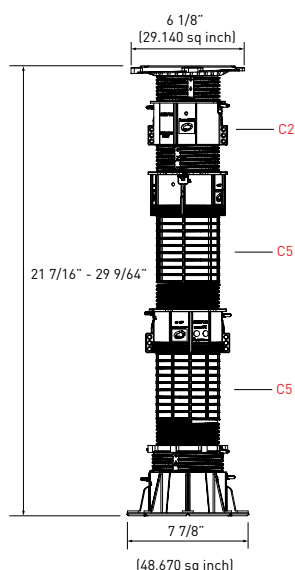


Buzon Pedestal International s.a./n.v.

Z.I. des Hauts-Sarts - Prolongement de l'Abbaye, 134 - B-4040 Herstal - Belgique

Tel +32 (0) 4 248 39 83 Fax +32 (0) 4 264 82 38 E-mail info@buzon-world.com www.buzon-world.com

DPH-10-PH5 - height 21 7/16" - 29 9/64"



Keys: security locking key to fix pedestal at the height required.



Height range

Adjustable uninterrupted from 21 7/16" to 29 9/64" with slope correction of 0-5%.

Composition

DPH-5-PH5 pedestal plus 3 x couplers (1 x DPH-C2 + 2 x DPH-C5) and 10 security locking keys.

Material

Co-polymer polypropylene (CPP), material thickness 1/16" to 13/64".
Composition: 80% CPP **recycled**, 20% talc + UV master batch black, and 100% recyclable.

Dimensions

Top - diameter 6 1/8", surface area 29.140 sq inch.

Base - diameter 7 7/8", surface area 48.670 sq inch.

Performance characteristics

Resistant to aging, poor weather conditions, UV light, almost all chemicals, and rot proof.

Suitable for use in temperatures from -22°F to + 194°F.

Application

Support for raised decks. Can support any type of timber decking or ceramic, stone, concrete paving or flag material, as well as fibreglass or metal grid panels.

Suitable for any kind of stable substrate, including applications directly over insulation panels.

Integral slope corrector

Pre-integrated in the head of the pedestal.

Provides slope correction from 0-5%

(in 0.5% increments).



Accessories

Spacer tabs: For achieving uniform spaces between used decking material. Available in 1/16, 1/8, 3/16, 1/4, 5/16 and 25/64 Inches. Fixed to top of pedestal by clipping in only. Tab heights: 11/16" or 1" dependent on tile thickness.



Available with tab widths of 1/16, 3/16, 1/4, 5/16 and 25/64 Inches



Available with tab widths of 1/8 and 3/16 Inches

Joist support: Supports timber, aluminium or composite joists for most decking systems.



Joist max. 2 9/16"
Thickness 5/32"

Shim: Enhances acoustic performance and can help leveling uneven paving materials.



1/32" and 1/16" thickness
EPDM -60 Shore

Load capacity (1 daN = 1kg/f = 2.23lb/f)

Tests executed with load bearing on central (1/1), half (1/2) and quarter (1/4) position on the pedestal.

| Position | Height (Inch) | Slope | Load (daN) | Load (lbf) |
|----------|---------------|-------|------------|------------|
| 1/1 | 29 9/64 | 0% | 1240 | 2765 |
| 1/2 | 29 9/64 | 0% | 982 | 2186 |
| 1/4 | 29 9/64 | 0% | 525 | 1193 |

Safety recommendation for use of Buzon Pedestals System :

1. Areas reserved for pedestrian access : divide the load indicated in the table by 2 with an addition safety factor of -15%.
2. Areas reserved for industrial and technical applications : divide the load indicated in the table by 4 with an addition safety factor of -15%.
3. The BUZON Pedestals System is not designed to support or be subjected to vibrating and/or moving machinery & equipment, including maintenance & cleaning vehicles, automobile & other vehicles, etc...

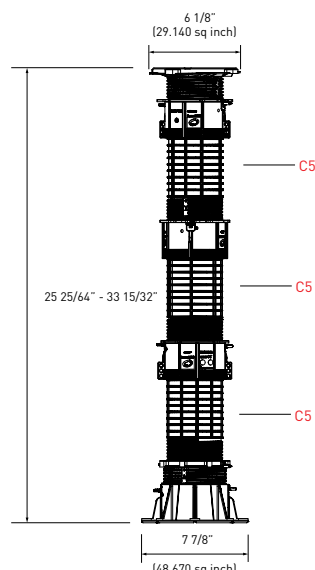


Buzon Pedestal International s.a./n.v.

Z.I. des Hauts-Sarts - Prolongement de l'Abbaye, 134 - B-4040 Herstal - Belgique

Tel +32 (0) 4 248 39 83 Fax +32 (0) 4 264 82 38 E-mail info@buzon-world.com www.buzon-world.com

DPH-11-PH5 - height 25 25/64" - 33 15/32"



Keys: security locking key to fix pedestal at the height required.



Height range

Adjustable uninterrupted from 25 25/64" to 33 15/32" with slope correction of 0-5%.

Composition

DPH-5-PH5 pedestal plus 3 x couplers (DPH-C5) and 10 security locking keys.

Material

Co-polymer polypropylene (CPP), material thickness 1/16" to 13/64".

Composition: 80% CPP **recycled**, 20% talc + UV master batch black, and 100% recyclable.

Dimensions

Top - diameter 6 1/8", surface area 29.140 sq inch.

Base - diameter 7 7/8", surface area 48.670 sq inch.

Performance characteristics

Resistant to aging, poor weather conditions, UV light, almost all chemicals, and rot proof.

Suitable for use in temperatures from -22°F to + 194°F.

Application

Support for raised decks. Can support any type of timber decking or ceramic, stone, concrete paving or flag material, as well as fibreglass or metal grid panels.

Suitable for any kind of stable substrate, including applications directly over insulation panels.

Integral slope corrector

Pre-integrated in the head of the pedestal.

Provides slope correction from 0-5%

(in 0.5% increments).



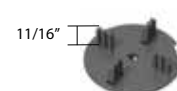
Accessories

Spacer tabs: For achieving uniform spaces between used decking material. Available in 1/16, 1/8, 3/16, 1/4, 5/16 and 25/64 Inches.

Fixed to top of pedestal by clipping in only. Tab heights: 11/16" or 1" dependent on tile thickness.



Available with tab widths of 1/16, 3/16, 1/4, 5/16 and 25/64 Inches



Available with tab widths of 1/8 and 3/16 Inches

Joist support: Supports timber, aluminium or composite joists for most decking systems.



Joist max. 2 9/16" Thickness 5/32"

Shim: Enhances acoustic performance and can help leveling uneven paving materials.



1/32" and 1/16" thickness

EPDM -60 Shore

Load capacity (1 daN = 1kg/f = 2.23lb/f)

Tests executed with load bearing on central (1/1), half (1/2) and quarter (1/4) position on the pedestal.

| Position (lbf) | Height (Inch) | Slope | Load (daN) | Load |
|----------------|---------------|-------|------------|------|
| 1/1 | 33 15/32 | 0% | 1322 | 2947 |
| 1/2 | 33 15/32 | 0% | 1077 | 2401 |
| 1/4 | 33 15/32 | 0% | 680 | 1516 |

Safety recommendation for use of Buzon Pedestals System :

1. Areas reserved for pedestrian access : divide the load indicated in the table by 2 with an addition safety factor of -15%.
2. Areas reserved for industrial and technical applications : divide the load indicated in the table by 4 with an addition safety factor of -15%.
3. The BUZON Pedestals System is not designed to support or be subjected to vibrating and/or moving machinery & equipment, including maintenance & cleaning vehicles, automobile & other vehicles, etc...

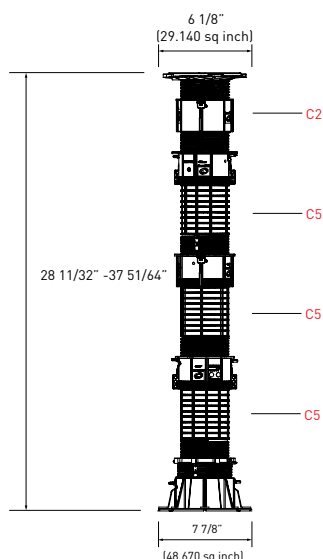


Buzon Pedestal International s.a./n.v.

Z.I. des Hauts-Sarts - Prolongement de l'Abbaye, 134 - B-4040 Herstal - Belgique

Tel +32 (0) 4 248 39 83 Fax +32 (0) 4 264 82 38 E-mail info@buzon-world.com www.buzon-world.com

DPH-12-PH5 - height 28 11/32" - 37 51/64"



Keys: security locking key to fix pedestal at the height required.



Height range

Adjustable uninterrupted from 28 11/32" to 37 51/64" with slope correction of 0-5%.

Composition

DPH-5-PH5 pedestal plus 4 x couplers (1 x DPH-C2 + 3 x DPH-C5) and 12 security locking keys.

Material

Co-polymer polypropylene (CPP), material thickness 1/16" to 13/64".
Composition: 80% CPP **recycled**, 20% talc + UV master batch black, and 100% recyclable.

Dimensions

Top - diameter 6 1/8", surface area 29.140 sq inch.

Base - diameter 7 7/8", surface area 48.670 sq inch.

Performance characteristics

Resistant to aging, poor weather conditions, UV light, almost all chemicals, and rot proof.

Suitable for use in temperatures from -22°F to + 194°F.

Application

Support for raised decks. Can support any type of timber decking or ceramic, stone, concrete paving or flag material, as well as fibreglass or metal grid panels.

Suitable for any kind of stable substrate, including applications directly over insulation panels.

Integral slope corrector

Pre-integrated in the head of the pedestal.

Provides slope correction from 0-5%

(in 0.5% increments).

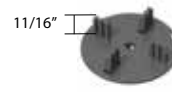


Accessories

Spacer tabs: For achieving uniform spaces between used decking material. Available in 1/16, 1/8, 3/16, 1/4, 5/16 and 25/64 Inches. Fixed to top of pedestal by clipping in only. Tab heights: 11/16" or 1" dependent on tile thickness.



Available with tab widths of 1/16, 3/16, 1/4, 5/16 and 25/64 Inches



Available with tab widths of 1/8 and 3/16 Inches

Joist support: Supports timber, aluminium or composite joists for most decking systems.



Joist max. 2 9/16"
Thickness 5/32"

Shim: Enhances acoustic performance and can help leveling uneven paving materials.



1/32" and 1/16" thickness
EPDM -60 Shore

Load capacity (1 daN = 1kg/f = 2.23lb/f)

Tests executed with load bearing on central (1/1), half (1/2) and quarter (1/4) position on the pedestal.

| Position (lbf) | Height (inch) | Slope | Load (daN) | Load |
|----------------|---------------|-------|------------|------|
| 1/1 | 37 51/64 | 0% | 1300 | 2899 |
| 1/2 | 37 51/64 | 0% | 910 | 2029 |
| 1/4 | 37 51/64 | 0% | 700 | 1561 |

Safety recommendation for use of Buzon Pedestals System :

1. Areas reserved for pedestrian access : divide the load indicated in the table by 2 with an addition safety factor of -15%.
2. Areas reserved for industrial and technical applications : divide the load indicated in the table by 4 with an addition safety factor of -15%.
3. The BUZON Pedestals System is not designed to support or be subjected to vibrating and/or moving machinery & equipment, including maintenance & cleaning vehicles, automobile & other vehicles, etc...



Buzon Pedestal International s.a./n.v.

Z.I. des Hauts-Sarts - Prolongement de l'Abbaye, 134 - B-4040 Herstal - Belgique

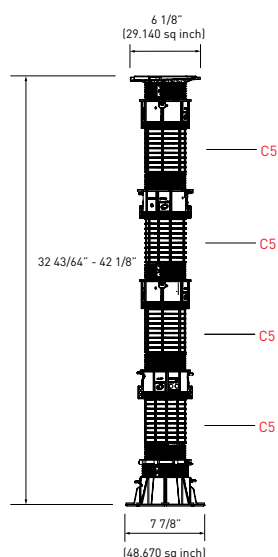
Tel +32 (0) 4 248 39 83

Fax +32 (0) 4 264 82 38

E-mail info@buzon-world.com

www.buzon-world.com

DPH-13-PH5 - height 32 43/64" - 42 1/8"



Keys: security locking key to fix pedestal at the height required.



Height range

Adjustable uninterrupted from 32 43/64" to 42 1/8" with slope correction of 0-5%.

Composition

DPH-5-PH5 pedestal plus 4 x couplers (DPH-C5) and 12 security locking keys.

Material

Co-polymer polypropylene (CPP), material thickness 1/16" to 13/64".
Composition: 80% CPP **recycled**, 20% talc + UV master batch black, and 100% recyclable.

Dimensions

Top - diameter 6 1/8", surface area 29.140 sq inch.

Base - diameter 7 7/8", surface area 48.670 sq inch.

Performance characteristics

Resistant to aging, poor weather conditions, UV light, almost all chemicals, and rot proof.

Suitable for use in temperatures from -22°F to + 194°F.

Application

Support for raised decks. Can support any type of timber decking or ceramic, stone, concrete paving or flag material, as well as fibreglass or metal grid panels.

Suitable for any kind of stable substrate, including applications directly over insulation panels.

Integral slope corrector

Pre-integrated in the head of the pedestal.

Provides slope correction from 0-5%

(in 0.5% increments).

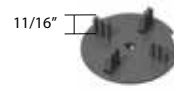


Accessories

Spacer tabs: For achieving uniform spaces between used decking material. Available in 1/16, 1/8, 3/16, 1/4, 5/16 and 25/64 Inches. Fixed to top of pedestal by clipping in only. Tab heights: 11/16" or 1" dependent on tile thickness.



Available with tab widths of 1/16, 3/16, 1/4, 5/16 and 25/64 Inches



Available with tab widths of 1/8 and 3/16 Inches

Joist support: Supports timber, aluminium or composite joists for most decking systems.



Joist max. 2 9/16"
Thickness 5/32"

Shim: Enhances acoustic performance and can help leveling uneven paving materials.



1/32" and 1/16" thickness
EPDM -60 Shore

Load capacity (1 daN = 1 kg/f = 2.23lb/f)

Tests executed with load bearing on central (1/1), half (1/2) and quarter (1/4) position on the pedestal.

| Position (lbf) | Height (Inch) | Slope | Load (daN) | Load |
|----------------|---------------|-------|------------|------|
| 1/1 | 42 1/8 | 0% | 1248 | 2784 |
| 1/2 | 42 1/8 | 0% | 940 | 2096 |
| 1/4 | 42 1/8 | 0% | 620 | 1383 |

Safety recommendation for use of Buzon Pedestals System :

1. Areas reserved for pedestrian access : divide the load indicated in the table by 2 with an addition safety factor of -15%.
2. Areas reserved for industrial and technical applications : divide the load indicated in the table by 4 with an addition safety factor of -15%.
3. The BUZON Pedestals System is not designed to support or be subjected to vibrating and/or moving machinery & equipment, including maintenance & cleaning vehicles, automobile & other vehicles, etc...



Buzon Pedestal International s.a./n.v.

Z.I. des Hauts-Sarts - Prolongement de l'Abbaye, 134 - B-4040 Herstal - Belgique

Tel +32 (0) 4 248 39 83 Fax +32 (0) 4 264 82 38 E-mail info@buzon-world.com www.buzon-world.com